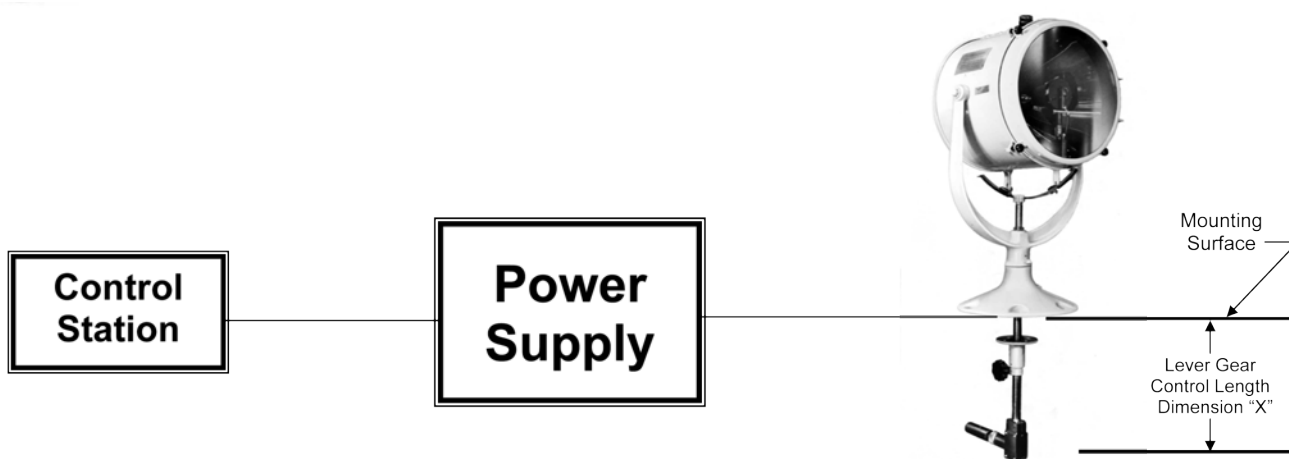


## 500 WATT XENON LEVER-GEAR CONFIGURATION GUIDE



**Select Control Station...**

**Model 4441X-RF**

**Select 115 VAC Power Supply...**

**Model 4198PS-1**

(NOTE: Consult Factory for 220/230 VAC)

**Select Searchlight Model and Specify "X" Lever Dimension...**

**Model X9396LG-RF**

**How to Specify...** Each system consists of (1) Searchlight Model X9396LG-RF, (1) 115 VAC Power Supply Model Number 4198PS-1 and (1) Control Station Model 4441X-RF. The lever gear control length, i.e. Dimension "X", is a standard length of 22-inches. Customer can specify a custom dimension, by providing factory the exact distance from the bottom of searchlight base, to the center line of the lever gear handle.

## 500 WATT XENON DEC SEARCHLIGHTS

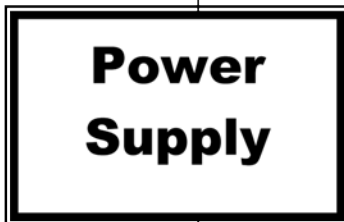
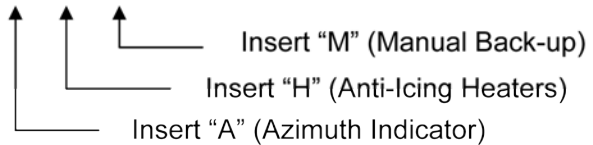


### Select one Searchlight Model...

**Model X9398-RF (standard)**

...or add options

**Model X9398- \_ \_ \_ RF**



### Select one Power Supply Model...

**Model 4198PSDE-1**

NOTE: Above power supply is 115VAC-only. Consult Factory for 220/230VAC.



### Select one or more Control Stations...

**Indoor Station: C4-1M-1**

**Outdoor Station: C4E1M-1-1**

NOTE: As many stations can be selected as desired. Above are recessed-mounted below console. If a station completely enclosed within a weatherproof box is desired, consult factory.



### Select Optional Azimuth Indicator...

**Model 10569A (must be indoors and recessed mounted)**

Note: Azimuth Indicator is optional. Only add if required.

**How to Specify...** Select one Searchlight, one Power Supply and one or more Joystick Stations. Add an Optional Azimuth Indicator Panel if "A" is included in searchlight model. **Sample Configuration:** A 115 VAC Searchlight system with Azimuth Indicator, Anti-icing Heaters, Manual Back-up and includes (1) Indoor and (1) Outdoor weatherproof station would be: (1) X9398-AHMRF Searchlight, (1) 4198PSDE-1 Power Supply, (1) C4-1M-1 Indoor Joystick Station, (1) C4E1M-1-1 Outdoor Joystick Station and (1) 10569A Azimuth Indicator Panel.